

Section 1: Algebra

Chapter 2

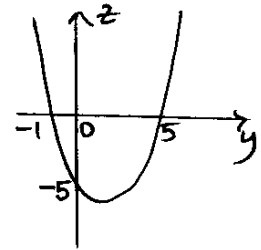
Exercise B

(x) $y^2 \geq 4y + 5$

$$y^2 - 4y - 5 \geq 0$$

$$(y - 5)(y + 1) \geq 0$$

The graph of $z = (y - 5)(y + 1)$ crosses the y axis when $y = 5$ or $y = -1$



Values where $z \geq 0$ are $y \leq -1$ or $y \geq 5$