

Section 1: Algebra

Chapter 2

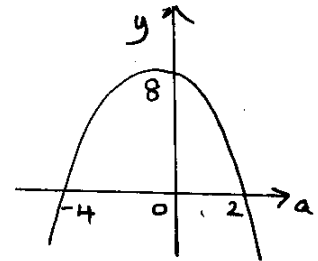
Exercise B

(viii) $8 - 2a \geq a^2$

$$8 - 2a - a^2 \geq 0$$

$$(4 + a)(2 - a) \geq 0$$

The graph of $y = (4 + a)(2 - a)$ crosses the a axis when $a = -4$ and $a = 2$



Values where $y \geq 0$ are $-4 \leq a \leq 2$