

Section 1: Algebra

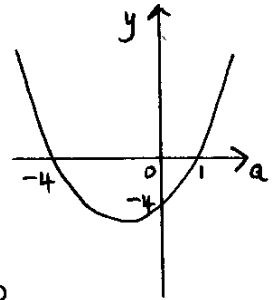
Chapter 2

Exercise B

(ii) $a^2 + 3a - 4 \leq 0$

$$(a+4)(a-1) \leq 0$$

The graph of $y = (a+4)(a-1)$ crosses the a axis when $a = -4$ and $a = 1$



You want the values of a for which $y \leq 0$

$$\rightarrow \underline{\underline{-4 \leq a \leq 1}}$$